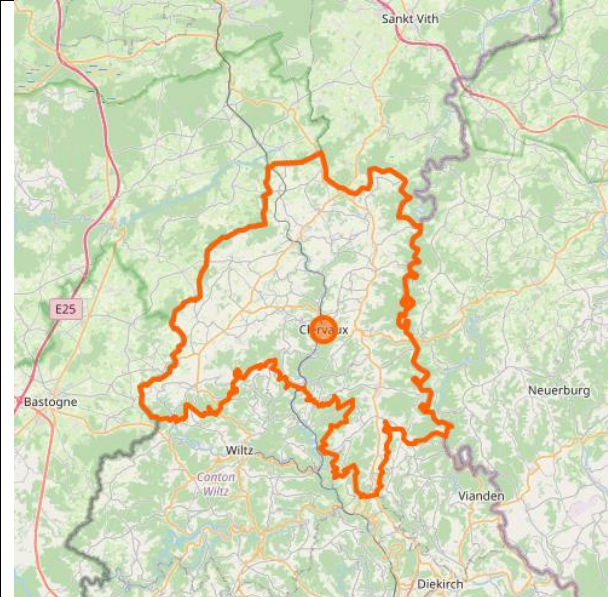


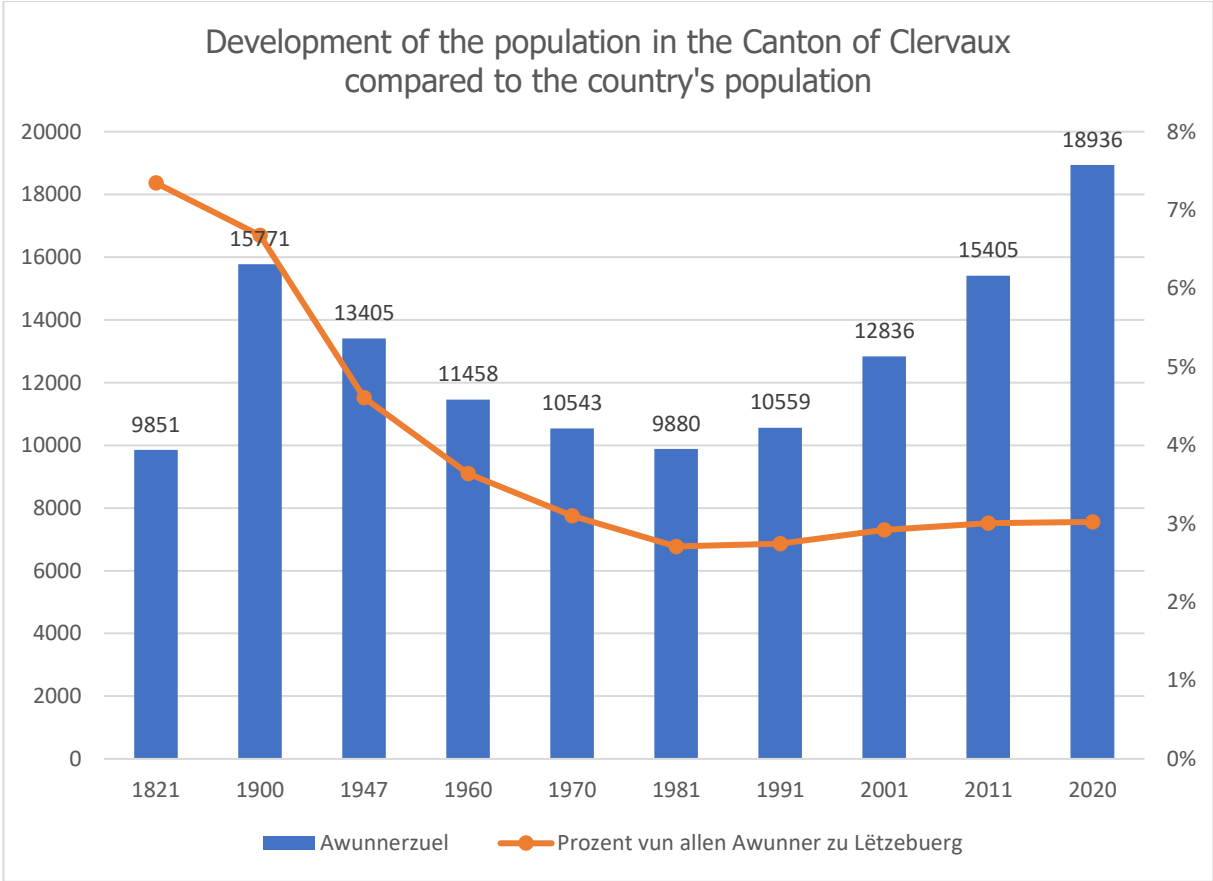
# History of the Canton of Clervaux

by Georges EICHER, [www.luxroots.com](http://www.luxroots.com), October 2020



With almost 331.75 km<sup>2</sup> (12.35% of the country's surface), Clervaux is the largest canton of Luxembourg. However, the percentage of the population, which has fallen from 7.35% to 3.02% over the last 200 years, is significantly lower. (Source: [statec.lu](http://statec.lu))

<https://www.openstreetmap.org/relation/1115796#map=9/49.6241/6.1661>



The canton of Clervaux was founded, after the annexation of our country by France in 1794, within the département des Forêts as one of the 27 cantons of this department.

**Neighbouring cantons at that time were:**

- Bastogne, in the département des forêts, with the municipalities of Bastogne, Bertogne, Boeur, Compogne, Givrroulle, Givry, Harzy, Longchamps, Longvilly, Mabompré, Mande-Saint-Etienne, Noville, Rachamps, Wardin and Vellereux
- Houffalize, in the département des forêts, with the municipalities of Bihain, Cherain, Cowan, Gouvy, Houffalize, Limerlé, Mont, Montleban, Ollomont, Ottré, Rettigny, Sommerain, les Tailles, Taverneux, Tavigny and Wibrin
- Vielsalm, in the Ourthe departement, with the municipalities of Arbrefontaine, Beho, Bovigny, Grand-Halleux, Lierneux and Vielsalm
- St.Vith, in the Ourthe department, with the municipalities of Amel, Crombach, Lommersweiler, Meyerode, Recht, Reuland, Thommen and St.Vith
- Arzfeld, in the département des forêts, with the municipalities of Arzfeld, Daleiden, Eschfeld, Habscheid, Harspelt, Leidenborn, Lichtenborn, Lünebach, Olmscheid, Pronsfeld, Ringhuscheid and Waxweiler.
- and the cantons of Wiltz, Diekirch and Vianden

**The canton comprised then the following municipalities and villages:**

- Asselborn with Biwisch, Boxhorn, Emeschbach, Rumlange, Sassel, Stockem, parts of Lentzweiler and Maulusmühle, ...
- Basbellain with Drinklange, Goedange, Hautbellain, Massen, Troisvierges, Wilwerdange
- Boevange with Crendal, Deiffelt, Doennange, Hamiville, Lullange, Troine, ...
- Clervaux
- Hachiville with Hoffelt, Lehresmühle, Neumühle and Weiler
- Heinerscheid with Fischbach, Grindhausen, Hupperdange, Lausdorn, Lieler, Kaesfurt, Kalborn
- Munshausen with Kocherei, Marburg, Marnach, Neidhausen, Reuler, Roder, Schwarzenhügel, Siebenaler and Urspelt
- Weicherdange with Drauffelt, Eselborn and Mecher
- Weiswampach with Binsfeld, Beiler, Holler, Huldigen, Breidfeld, Leithum, Wemperhardt, Käsfurt-Beiler, parts of Maulusmühle

In 1841, the canton of Vianden was dissolved and the following communes came to the canton of Clervaux

- Consthum with Holzthum and parts of Oberschlinder
- Hosingen with Bockholtz, Dorscheid, Obereisenbach, Übereisenbach, Untereisenbach, Wahlhausen, and the places of Fennberg, Dickt and Viandenenstrasse
- Pütscheid, until 1851 when the canton of Vianden was restored.

In 1977, the following villages were added by the merger of Winrange:

- Oberwampach with Allerborn, Niederwampach, Schimpach and the former municipality of Brachtenbach with Derenbach

In 2011, the municipalities of Clervaux, Heinerscheid and Munshausen merged into the municipality of Clervaux.

In 2012, the municipality of Parc Housen with the municipalities of Consthum, Hoscheid (from the canton of Diekirch) and Hosingen completed the current composition of the canton.

With Hoscheid, the following villages were added: Dickt, Unter- und Oberschlinder as well as Markenbach.

### **The following villages changed their municipality over time:**

In 1813, Neidhausen moved from the municipality of Munshausen to the municipality of Hosingen.

During the 2nd division of the Duchy of Luxembourg to Prussia in 1815, the following changes were made in the canton:

Rodershausen moves from the municipality of Dasburg to the municipality of Hosingen  
Übereisenbach leaves Hosingen and comes to the municipality of Karlshausen.

In 1820, Huldange moved from Weiswampach to the municipality of Basbellain.

With the municipal mergers of 1823, the municipalities of Brachtenbach and Weicherdange were dissolved:

Brachtenbach with Derenbach came to the municipality of Oberwampach  
Drauffelt comes from Weicherdange to the municipality of Munshausen and  
Eselborn, Mecher and Weicherdange come to the municipality of Clervaux  
The villages of Reuler and Urspelt change from the municipality of Munshausen to Clervaux.

In 1841, as mentioned above, the communes of Consthum, Hosingen and Pütscheid (the last one only until 1851) come to the canton of Clervaux.

In 1909, the municipality of Basbellain becomes the municipality of Troisvierges.

In 1925, Biwisch moved from Asselborn to the municipality of Troisvierges.

The volunteers of the luxroots.com association have now recorded the details of the more than 142,000 available documents in their database:

- 22,345 baptisms before 1798
- 58,644 births 1798-1923
- 3,074 marriages before 1798
- 11,630 marriages 1798-1923
- 8,079 deaths before 1798 and
- 38,429 deaths 1798-1923

### **Overview of the parishes of the canton as they existed before 1800:**

Asselborn with Biwisch, Boxhorn, Emeschbach, Rumlange, Sassel, part of Stockem  
Basbellain with Drinklange, Goedange, Hautbellain, Huldange, Troisvierges as well as Ourthe and Wathermal

Boevange with Wincrange and parts of Hamiville

Brachtenbach with Selscheid

Consthum with Holzthum, parts of Kautenbach and the Oberschlinder

Crendal with parts of Hamiville

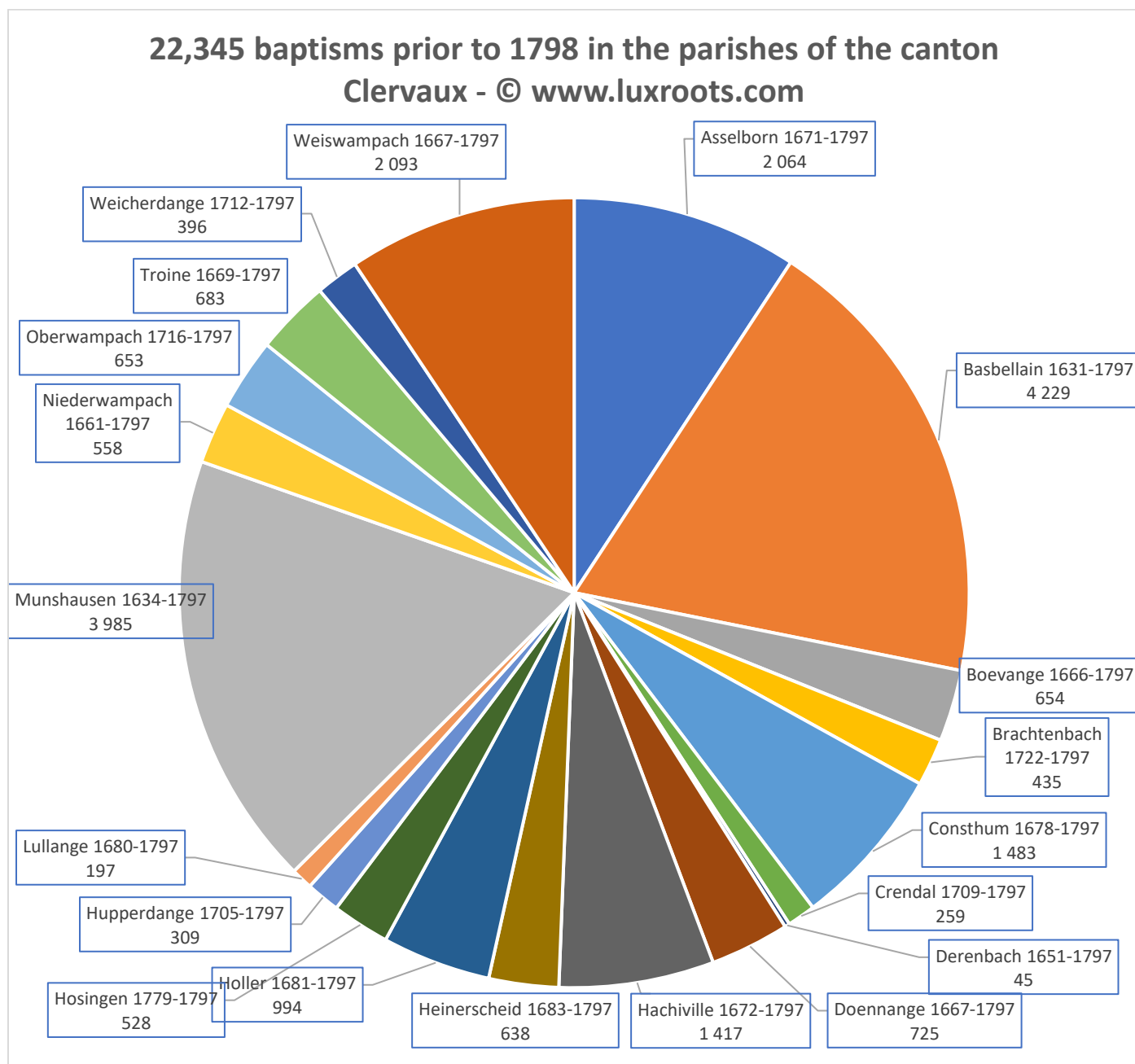
Derenbach

Doennange with Deiffelt, Eselborn, Lehresmühle, Stockem, and parts of Lentzweiler

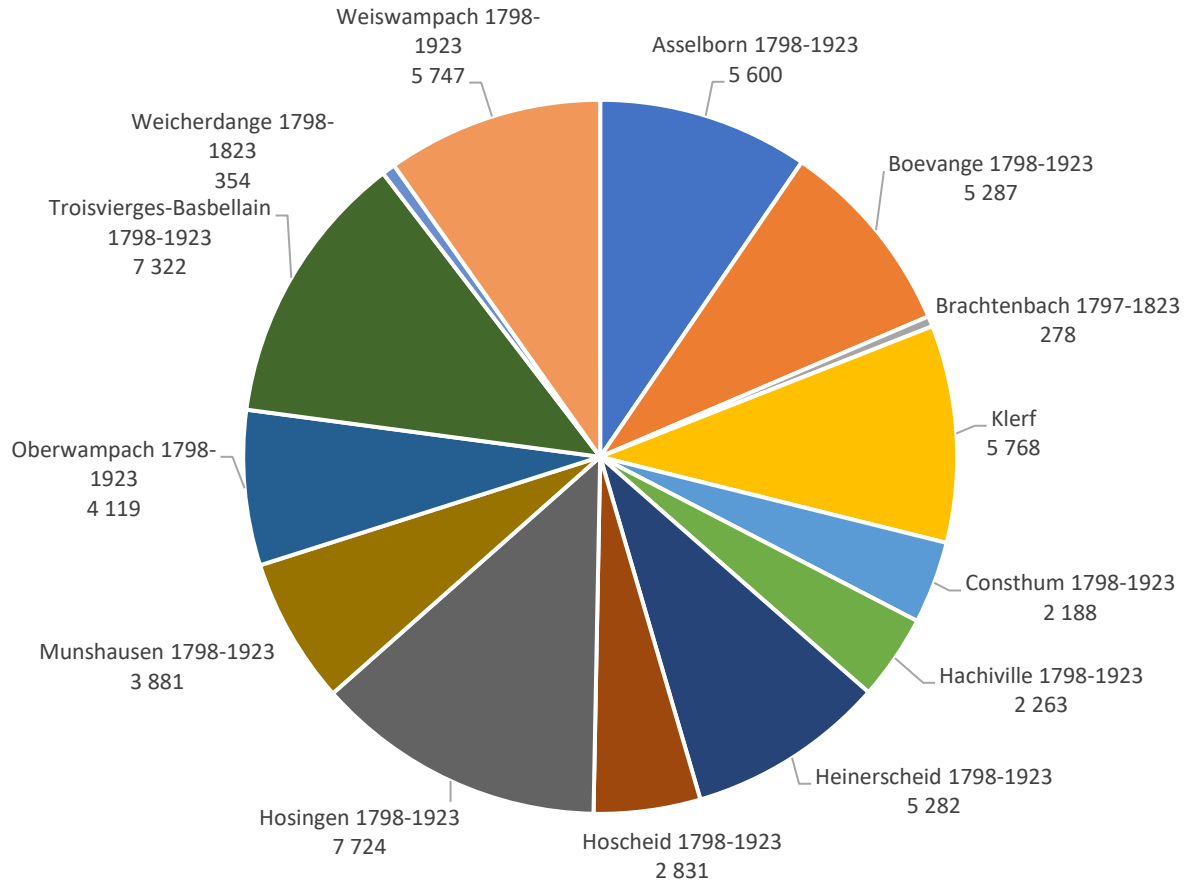
Hachiville with Hoffelt and Weiler

Heinerscheid with Kalborn  
 Holler with Binsfeld, Breidfeld, Massen  
 Hosingen with Dorscheid, Obereisenbach, Rodershausen, Übereisenbach, Untereisenbach and Wahlhausen  
 Hupperdange  
 Lullange with Neumühle and part of Stockem  
 Munshausen with Bockholtz, Fischbach, Grindhausen, Clervaux, Marnach, Neidhausen, Reuler, Roder, Urspelt  
 Niederwampach with Schimpach  
 Oberwampach with Allerborn and Grümmelscheid  
 Troine  
 Weicherdange with Mecher  
 Weiswampach with Beiler, Leithum, Lieler and Malscheid

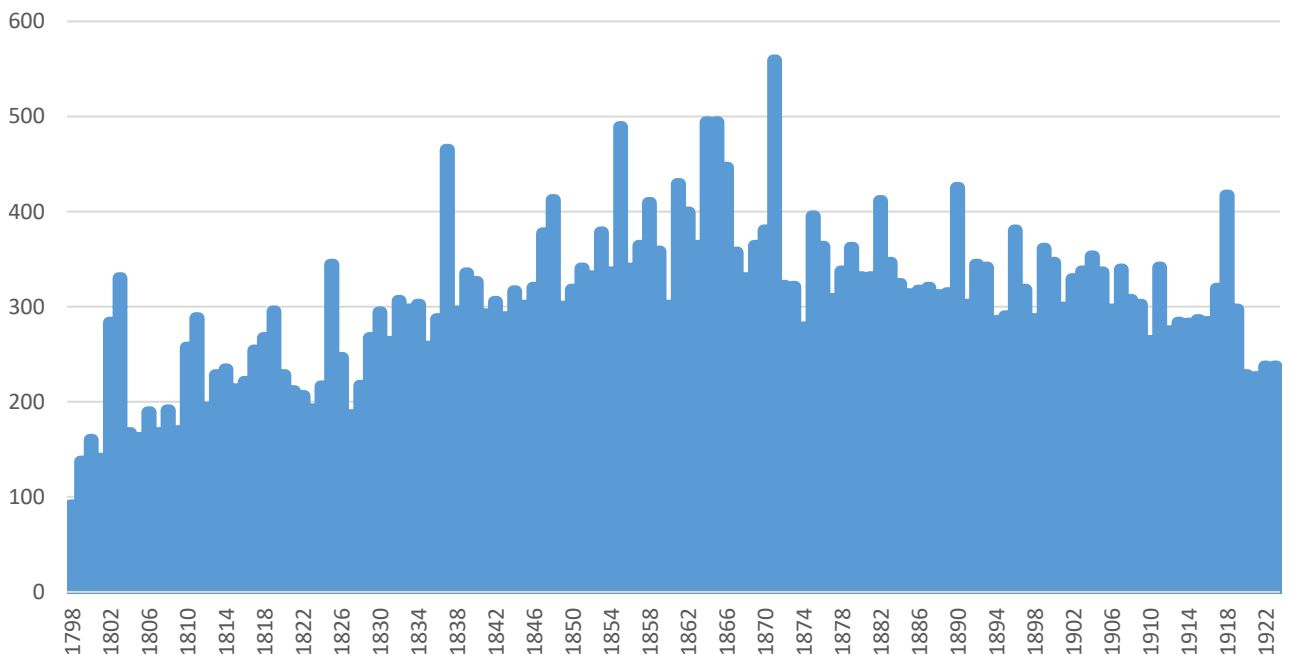
We will write about the surnames derived from these place names in another article.



## 58,644 births 1798-1923 in the municipalities of the canton of Clervaux - © www.luxroots.com



## 38,429 deaths 1798-1923 in the municipalities of the canton of Clervaux - © www.luxroots.com



107 of these 38,429 people (0.27%) died at 90 years or more, compared to 20.24%% in 2019 (source: statec.lu).

Let's mention the 100-year-olds:

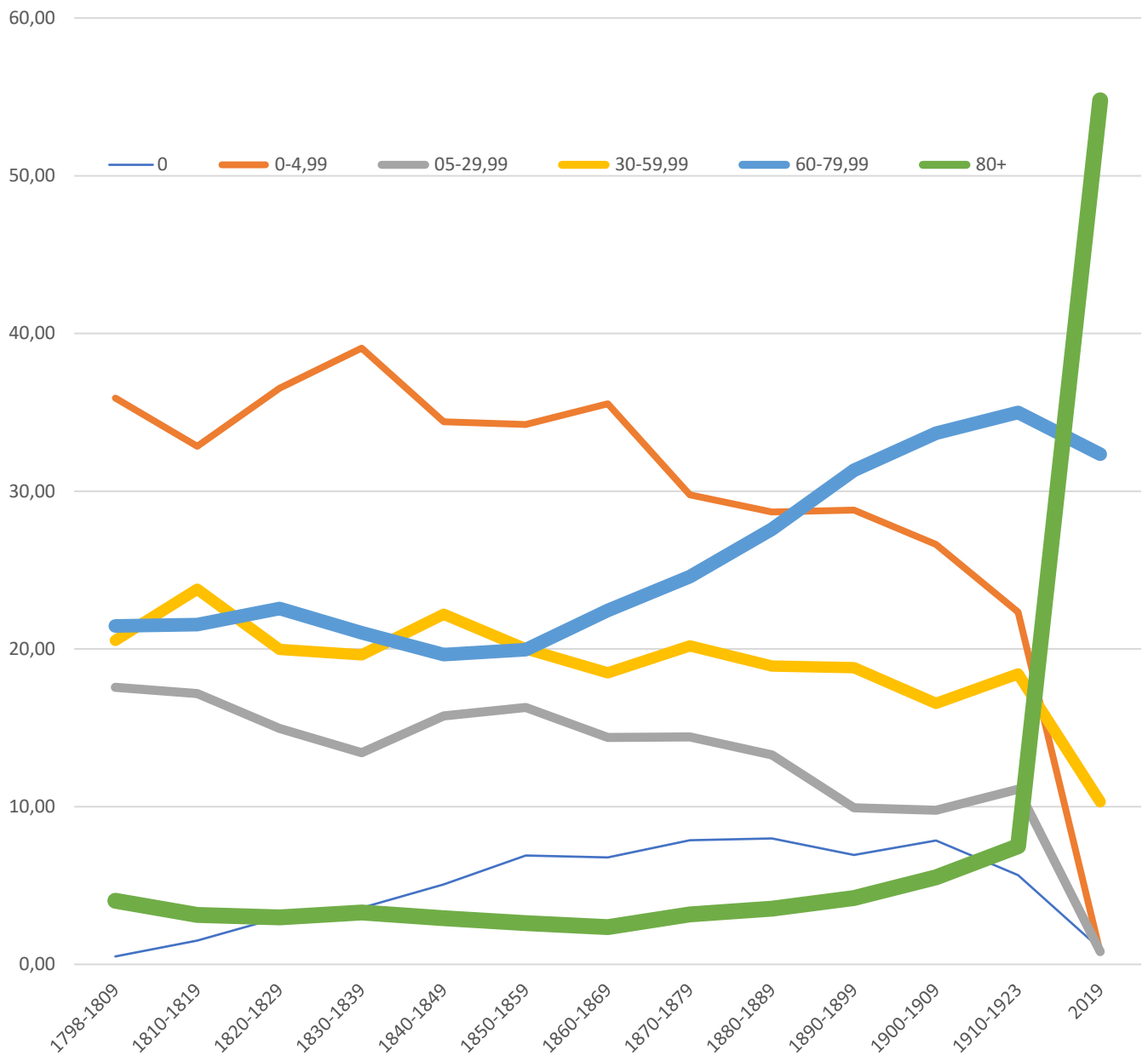
- Barbara LUX was born on March 20<sup>th</sup>, 1770 in Grindhausen and died on May 12<sup>th</sup>, 1870 in the ADAMES House in Heinerscheid
- Catherina AREND died at the age of 100 on February 18<sup>th</sup>, 1828 in Clervaux
- Maria Catharina LICKEN from Troisvierges, married to Michel GEIBEN and mother of 8 children, died on December 31<sup>th</sup>, 1811 in Consthum. The death certificate records her profession as a beggar.
- Nicolas VISEN died at the age of 101 years on January 28<sup>th</sup>, 1802 in Obereisenbach
- Cathrina STREVELER, married to Theodor SCHREIER, died at the age of 103 in the SCHIFFERS house in Hupperdingen on December 29<sup>th</sup>, 1828.

169 23. Im Jahre tausend achthundert acht und zwanzig, den *zwanzigsten* des Monats *septembere*, um *zwey* Uhr des *abends* sind vor uns *johann Simon*, Beamter des Civilstandes der Gemeinde von *heinerscheid*, Kanton von *Arwef*, im Groß-herzogthum Lüzemburg, erschienen *johann Schmitz*, alt *zwanzig* nien Jahre, *wohnend wozu hertz zu hupperdingen* und *Nicola Theisen* *Tagelöhner*, alt *fünffzig* nien Jahre, *wohnend zu heinerscheid* welche in dieser Gemeinde wohnhaft sind. Diese haben uns erklärt, daß *Catharina Streveler* *unverheiratet* alt *hundert* dem Jahre, *gebürtig* zu *Fischbach* im *Diefen Canton nro fueri in 6 Kreisfont* *Theodor Schreier* *nro hnt zu Fischbach* verschieden ist *am 29sten des Monats zwanzigsten* um *acht* Uhr des *abends* zu *hupperdingen* in dem Hause N°. *111* *111* Gasse; und *Schmitz* *zwey* gegenwärtigen Akt, nachdem er ihnen vorher vorgelesen worden, mit uns unterschrieben.

*J. Schmitz* *Nicola Theisen*  
*J. Simon*

## Development of mortality according to the death records of the canton of Clervaux 1798-1923 and in comparison to the state data for 2019

(© statec.lu) - © luxroots.com Asbl



Age Cat.	1798-1809	1810-1819	1820-1829	1830-1839	1840-1849	1850-1859	1860-1869	1870-1879	1880-1889	1890-1899	1900-1909	1910-1923	Total
<b>0</b>	11	37	69	111	164	253	270	285	265	231	255	225	<b>2176</b>
<b>0-4,99</b>	785	805	845	1212	1114	1254	1414	1079	952	960	864	888	<b>12172</b>
<b>05-29,99</b>	384	421	346	416	510	597	572	523	441	331	317	441	<b>5299</b>
<b>30-59,99</b>	449	583	462	609	719	733	735	732	628	627	537	732	<b>7546</b>
<b>60-79,99</b>	469	528	522	652	636	731	893	891	916	1044	1093	1391	<b>9766</b>
<b>80+</b>	88	77	69	102	95	96	94	115	117	140	179	298	<b>1470</b>
<b>Total</b>	<b>2186</b>	<b>2451</b>	<b>2313</b>	<b>3102</b>	<b>3238</b>	<b>3664</b>	<b>3978</b>	<b>3625</b>	<b>3319</b>	<b>3333</b>	<b>3245</b>	<b>3975</b>	<b>38429</b>

### **Notaries before 1800 in the canton of Clervaux**

- Oberbesslingen (Servaix URBIN 1765-1778)
- Basbellain (Jean Henri DUPONT 1688-1741, Jean Paul FRANCK 1731-1773)
- Wilwerdange (Jean HORMAN 1782-1796)
- Weiswampach (Jean Philippe MICHAELIS 1764-1796, Antoine DUPONT 1787-1809)
- Asselborn (Jean DECLAYE 1732-1777)
- Hoffelt (Jean Pierre DENGLER 1760-1807)
- Clervaux (Conrad BISCHOFF 1606-1636, Nicolas KNAUS 1755-1796, Michel MARTINY 1760-1769, Antoine ENSCH 1778-1811)
- Marnach (Mathias MARNACH 1776-1779)
- Hosingen after 1800

Other notaries in the region were/are Bastogne, Dasburg, Arzfeld, Diekirch, Vianden, Wiltz

### **Pierre BURGRAFF (1803-1881)**

One cannot write an historical article about the canton of Clervaux without mentioning the great scholar of his time, Pierre BURGRAFF.

He was born on July 28<sup>th</sup>, 1803 in Troine in simple circumstances. With his uncle he learned Latin and elements of theology. He himself learned Greek, history and geography.

He studied in Namur, Louvain, Bonn and Paris, and learned Arabic and Hebrew.

In 1837, he became a professor at the University of Liege, where he taught Arabic, Hebrew and Greek. He died on 17 July 1881 and was buried in Troine. [More.](#)

#### Sources:

Georges BENOIT, Vielsalm

Christian BINZ, Herresbach

Albert CALMES, Au fil de l'histoire II (1971)

Alphonse WILTGEN, les notaires au Luxembourg

wikipedia.org

luxroots.com asbl from the information provided by the civil registers and church records